

# SNIPPETS

September 2012  
Issue 405



Debra concentrates on perfecting her Precious Metal Clay technique.  
More PMC information on page 4.

## UPCOMING GOLD COAST MEETINGS and EVENTS

MANAGEMENT COMMITTEE MEETINGS	2 <sup>nd</sup> TUESDAY in the month
GENERAL MEETING	3 <sup>rd</sup> TUESDAY in the month (unless advertised differently)
OPEN DAY	SATURDAY, 20 OCTOBER 10.00 - 2
GARAGE SALE	SATURDAY, 17 NOVEMBER 6.00am

## IN THIS ISSUE

1. Meeting dates. Pic of the month.
2. Committee and general information.
3. Presidents report.
4. PMC classes and pics. Little Gems.
5. Gem show dates. Competition info.
6. What's special about a birthstone.
7. Happy birthday. Garage sale. Open day.

## Monthly Newsletter of the Gold Coast Lapidary Club Inc

[www.goldcoastlapidaryclub.com.au](http://www.goldcoastlapidaryclub.com.au)

Members of Queensland Lapidary & Allied Craft Associations Inc.

80 Pacific Avenue, Miami, Queensland. PO Box 12, Nobby Beach Queensland 4218 Phone: 5526 1190

Hon Patron: Joan Cardwell

### The Management Committee 2012-2013

President	Geoff Saunders	5568 7616 - 0407 125 567			
Vice President	Ken Wilks	5578 9419	Vice President	Allen Frentz	5571 6436
Secretary	Wayne Schulz	0417 961865	Treasurer	Craig Strachan	0466 997 445
Committee	Trev Nelson	02 6676 0451	Committee	Wendy Pollock	5523 1493
Committee	John Nelmes	0412 575 995			
Committee	Bill Gurnett	5539 0495			
Snippets Editor	Elaine Arch-Rowe	5535 1151	Competition Steward	Mal Wanchap	5579 8908
Purchasing Officer	Geoff Saunders		Senior Librarian	Liz Nicholas	5597 4120
Raffle Coordinator	Pru Aguinaldo	5520 6624	Show Case Steward	TBA	
Saw Master	TBA		Field Trip Coordinator	TBA	
QLACCA delegate	TBA				

#### Show Coordinator

Allen Frentz      5571 6436

#### Judges

Faceting    Robert McGregor                      Cabochons    Ken Wilks                                      Carving      Allen Frentz

#### Instructors & Workshop Times

Cabbing	Tuesday	10.00am - 3.00	Shirley Sunderland	0411 175 095
	Wednesday	10.00am - 3.00	Dennis Burton	5527 6448
	Wednesday	10.00am - 3.00	Ray Tolley	5524 4642
	Thursday	10.00am - 3.00	Shirley Sunderland	0411 175 095
	Thursday	10.00am - 3.00	Joan Caldwell	5594 1458
	Thursday	10.00am - 3.00	Ron Barr	5539 4737
	Wednesday Night	7.00pm - 9.30	John Nelmes	0412 575 995
			Terry Houghton	5594 6814
			Jadwiga Siwka	5572 0924
	Friday Night	7.00pm - 9.30	Malcolm Wanchap	5579 8908
Adv/Cab/Carving	to be announced			
PMC Classes	(arrange with instructor)		Shirley Sunderland	5535 7077
Free Frm/Boats	Tuesday (1 <sup>st</sup> & 2 <sup>nd</sup> week of month/book with instructor)			Laurence Yannacelli      5577 2185
Carving/Bone	Tuesday	10.00am - 3.00	John Tonkin	5534 7121
Investing	Wednesday (book with instructor)		Geoff Saunders	5568 7616 - 0407125567
Casting	Thursday (book with instructor)		Geoff Saunders	5568 7616 - 0407125567
Faceting	Wednesday night	7.00pm - 9.30	Peter Smith	5530 5826
			Chez Siwka	5572 0924
	Thursday	10.00am - 3.00	Rod Turville	5539 4450
			Brian Brown	55278552
Silver/Cab/Setting	Thursday	10.00am - 12.00	Ron Barr	5539 4737
Silver Jewellery	Wednesday	10.00am - 3.00	Jadwiga Siwka	5572 0924
Basic Silver	Wednesday night	7.00pm (list)	Jadwiga Siwka	5572 0924
	Friday night	7.00pm (list)	George Leskys	0409 583 8565
			Jenny Farmer	0412 459 474
Wire Wrapping	Wednesday	7.00 pm	(list)	Chris Loughlin      0406 715 322
Creative Metal Arts	TBA			Trev Nelson      02 6676 0451
Soap Stone Carving	Friday	7.00pm		Mervyn Scott      5531 4576

## PRESIDENTS REPORT

Hello members

Well we are into spring and the weather allows us to get things done without being rugged up, would love to see some weekly rain though.

I would like to thank Mr Bruce Bedford for the donation of the 12 inch flat lap. I would like to see this in place in the cabbing room as soon as I can arrange it for members to polish the backs of their cabs. I am sure it will beat the time needed with grit on glass.

I would like to remind members about our open day, where the club is open for the public to view what we do in the club. The date is Saturday, 20th October. The club needs many hands so I ask for your assistance. Please let myself or Wayne Schulz know where you would like to help out.

I am very disappointed that a blade has been damaged in the saw room. There is a black book in the saw room for anybody using the 12 inch or the 18 inch saw to place your name in the book before commencing to operate the saws; if this was done I might know what happened to the blade. In future if I see the saws being used and your name is not in the book, you will be asked to remove your stone from the saw and leave the saw room. If you wish to address this please attend the next general meeting and challenge me about it.

We are attempting to change the 18 inch saw over to gravity feed. We have started the changes with the help of Mr Malcolm Wanchap (THANKS MAL) rather than pay for it to be done professionally. We are having the odd hiccups but hope to have them resolved shortly. Until we have it working reasonable the 18 inch is out of order. Once it is working I can see we will have restriction on who works it. Sorry if that offend some members. 😞

Please read in this issue of 'Snippets' about the Monster Garage Sale we will run on Saturday, 17 November. This cannot happen with out your generosity. We are asking if you have unwanted items laying around your home and wish to donate to the club. We will sell them, the club finances will get a boost and you will get rid of your unwanted items and members will have a great day at the club; so please support this as it is a first for us and I am sure it will be a success.

I think I have said enough for this issue; I do hope you are having fun and enjoying the friendship that a club like this brings, and as always, show tolerance to all of your fellow members.

Regards president

*Geoff*

PS. In this issue please read the mention of the Xmas party

## PRECIOUS METAL CLAY

There has been a lot interest in this class which is still in the fledgling stage. Instructor, Shirley Sunderland, has held a couple of classes and she hopes classes can be held once a month in the future. There has been a hold up in obtaining materials due to the huge cost of obtaining them in Australia and delays in ordering from overseas. Members interested in PMC classes please be patient; the club is trying to obtain the best possible price to make it less expensive for you.



Several members hard at work at the last PMC class



A few samples showing the fine work that can be achieved with PMC

### FUTURE CLASSES

(no dates yet, sorry)

Please place your name on the list in the club and keep your eye on the list for notice of future classes. Shirley is in the club Tuesdays and Thursdays.

## WE MISS YOU!

### **KEN the CABBER**

Ken hasn't been at the club the last couple of weeks. He is currently on sick leave. We miss you Ken and wish you a speedy recovery.

### **MARIE HOWARD**

We hear you are back home after your knee operation and being well cared for by your husband. We look forward to seeing you back at the club walking a straight line.

### **TRISH MORTON-ALLEN**

We look forward to your return to the club after your illness.

## LITTLE GEMS

### WELCOME TO THE FOLLOWING NEW MEMBERS

Lauren Finch	Jessica Cooper	Olga Radunz	Faye Caines
Peta Graham	Senga Smith	James Rider	

### THANKS WAYNE CULLEN

We would like to pass on a big thank you to Wayne Cullen from Coombabah for his generous donation to the Gold Coast Lapidary Club of a large amount of Tiger Iron rough from the Pilbara area of Western Australia.

Wayne is working in the area of Port Headland W.A. and has donated two lots of the tiger iron (approx 150kg.) to the club over the past few months. The material will be slabbed and made available to all club members at a nominal cost at our next monthly meeting and barbecue. Don't miss out!! Wayne has also kindly provided photos from the area where the Tiger Iron was collected and these will be available for viewing in the club rooms at the meeting.

### FOR SALE

Willoughby (Willie Washer) plus two metal sieves plus two gold pans. The lot \$165. Please phone Bill Gurnett on 0426 036 795

### XMAS PARTY

Last year's party was such a tremendous success that it would be silly not to use the same format again this year. Private catering in the club courtyard. More details next month.

### AUGUST RAFFLE RESULTS

1<sup>st</sup> Wayne Schulz      2<sup>nd</sup> Pru Aguinaldo.      Lucky Door prize Trevor Nelson

**QUEENSLAND GEM SHOWS FOR OCTOBER and NOVEMBER**

**OCTOBER**

6	QLACCA Management Meeting. Beenleigh Show - - - - -	10.00am
6	Beenleigh Gem Festival, Beenleigh Show Grounds - - - - -	8.00am
27/28	Toowoomba Gemfest	
	Centenary Heights High School, Ramsay St, Toowoomba - - - - -	Sat 8.30 - 4 Sun 9.00 - 3
27	QLACCA General Meeting, Toowoomba Gemfest - - - - -	10.00am

**NOVEMBER**

10/11	Bundaberg Gemfair
17	Suncoast Gem Show, Mooloolaba State School, Douglas St
10	QLACCA Christmas Party

**DECEMBER** No Events

**FACETING COMPETITION DETAILS FOR 2012-13**

**NOVICE**

	<b>CUT</b>	<b>MATERIALS</b>	<b>SIZE</b>
SEPTEMBER	Standard Round Brilliant	Amethyst	Any
OCTOBER	Easy Square	Any	Any
NOVEMBER	Standard Round Brilliant with continuous girdle	Any	Any
JANUARY	Novice Cushion Triangle	Coloured CZ	Any
FEBRUARY	Zircon Cut	Coloured CZ or Zircon	Any
MARCH	Modified Square Brilliant	Any	Any

**OPEN**

SEPTEMBER	Cushion Rectangle Combo	Amethyst	Any
OCTOBER	Flower	Coloured CZ	Any
NOVEMBER	Shining Beauty	MM Spinel	Any
JANUARY	Bobs Round 3A	Natural Smokey Quartz	Any
FEBRUARY	Amethyst Shield	Amethyst	Any
MARCH	Fire Star	MM Spinel	Any

(This is not a competition as such but more an assessment of your work. You will receive a judging sheet from a qualified judge showing you where you are doing well and where you need to improve)

PLEASE PHOTOCOPY THE CUTTING INSTRUCTIONS FROM THE ORIGINAL IN THE WORKROOM

**CABOCHON COMPETITION DETAILS 2012/13**

<b>MONTH</b>		<b>OPEN</b>	<b>NOVICE &amp; JUNIOR</b>
OCTOBER	Standard cab Oval Petrified Wood	any	any
NOVEMBER	Fancy cab	any	any
JANUARY	Standard cab	any	any

**APOLOGY**

We are unable to print results from the last 2 months cab and faceting competitions due to the absences of judges. These result will be made available as soon as possible.

*see page 6 for more competition information*

## WHAT IS SPECIAL ABOUT A BIRTHSTONE?

It has been said that giving a person a piece of jewellery containing their birthstone brings the wearer good luck and protection.

ORIGIN: Monthly birthstones symbolize the month of birth according to the Gregorian Calendar.

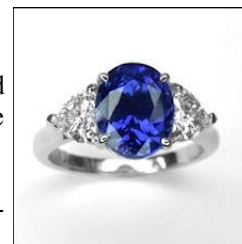
BIRTHSTONE FOR SEPTEMBER: Sapphire, possibly the easiest precious stone for a Gold Coaster to obtain. Just a few hundred clicks up the road to the Sapphire/ Rubyvale sapphire fossicking area. (See August 'Snippets' for more information)

OTHER LOCATIONS: Sri Lanka, Thailand, Cambodia, Burma, Kashmir, Nigeria, Kenya, Tanzania, China and USA.

HEALING PROPERTIES: Said to be effective for lowering fever, inflammation, hearing problems, cancer and burns.

COLOURS: The deep blue has always been a traditional favourite. Lately other colours such as green, yellow, red and pink are also becoming popular.

FAMILY: Sapphires are a member of the corundum family and are labelled "precious stones." The others are diamond, ruby and emerald.



***HAPPY BIRTHDAY TO ALL MEMBERS CELEBRATING THE SAPPHIRE!***

\*\*\*\*\*



Some members of an August Saturday class posing for photographer John Morris

## COMPETITION INFORMATION

GENERAL COMPETITION      November      Cast jewellery; no lapidary

For all competitions please place your bagged entry in the box next to the competition entry information.  
Your instructor will give you any additional information

*We wish to express our sincere thanks to Michael Hart, local MP, who has offered the facilities of his office for photocopying our Snippets Newsletter.*



## HAPPY 90th BIRTHDAY

To RAY SANDEMAN

Ray was head faceting instructor in the days before Rod Turville.

He now lives in the Golden Age Nursing Home, 60 Ridgeway Avenue, Southport with his wife Enid and would welcome visits from his old friends from the club.

Ray was a very good faceter and had many faceting awards to his name.



Ray, Enid and a group of friends celebrating Ray's birthday

## ***GARAGE SALE***

DATE: Saturday, 17 November

TIME: From 6.00am

VENUE: Gold Coast Lapidary Club (in the courtyard)

B.B.Q will be available from 7.00am

Dear Members

All those unwanted items you keep tripping over in your garage can now be donated to a good cause, your lapidary club! We're not thinking lapidary items; any general items at all. We would like them to be in sound condition though. Goods can be left any time after the October general meeting in the casting area in the club with a note for Geoff or Wayne.



It's sad we need to mention this but when you notice these donated items in the casting area please note they are a fund raiser for the club and are not to be removed.

## **OPEN DAY AT THE CLUB**

**20 OCTOBER 10.00 - 2.00**

**We would like as many members as possible to turn up and show visitors what we are all about.**

**The club stall will be operating**

